



306/1 Kyle Street Arncliffe NSW

2  2  1 

PLEASE CONTACT 0451 818 185 FOR INSPECTION BY APPOINTMENT

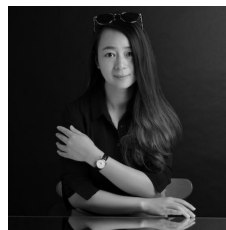
Enjoy the relax living style in this luxury two bedroom two bathroom apartment located within walking distance to Arncliffe Train Station

Features:

- Two Bedrooms all with built in Wardrobes
- Two Spacious Bathrooms with Bathtub
- One Secured Parking with lift access and storage cage
- Open Kitchen and living area with air-con
- Two Spacious Balconies
- NBN Internet Ready

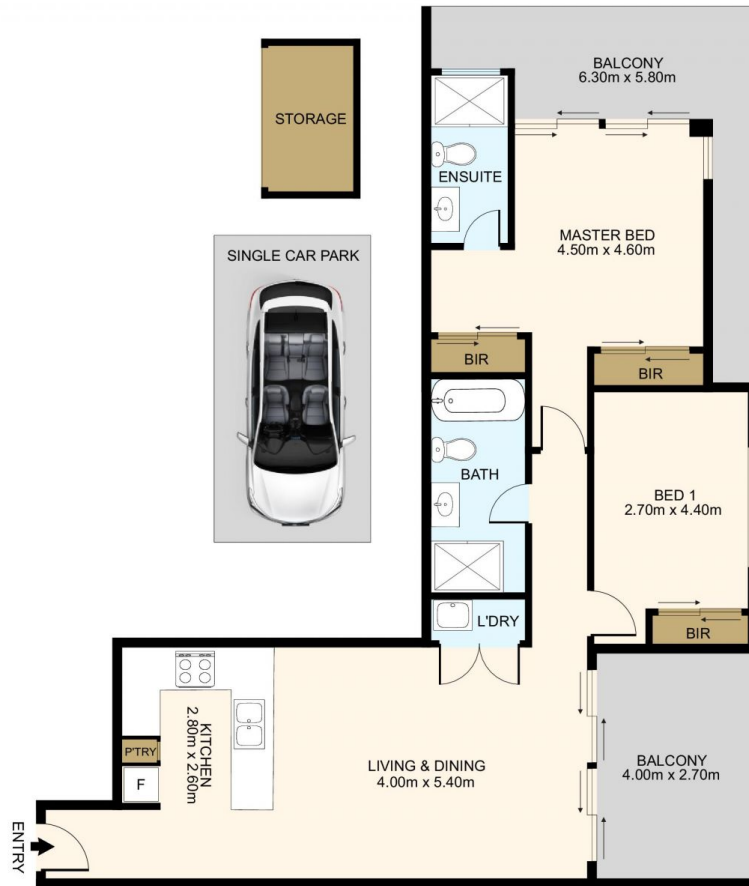
Type : Apartment

View : <https://www.lgvt.com.au/6473547>



Catherine (xiaochun) Dai
02 9763 1126

[For full version visit the website](https://www.lgvt.com.au)



DISCLAIMER: THIS IS FOR ILLUSTRATIVE PURPOSES ONLY. ALL DIMENSIONS ARE APPROXIMATE AND IT DOES NOT CONSTITUTE PART OF ANY LEGAL DOCUMENTS.

ADDRESS:

306/1 Kyle St, Arncliffe