

**1066/2E Porter Street Ryde NSW**

2  2  1 

This stunning two bedroom apartment is perfectly positioned in the Crowle Estate Complex situated near the heart of Meadowbank. Enjoy the bright and morning sunshine thanks to the east facing and excellent layout. This apartment presents a great opportunity for investors, first home buyers or down-size alike.

**Property features:**

- Large open plan living area
- Good size master bedroom with built-in wardrobes and ensuite
- Designer kitchen with quality cooking appliances, dishwasher and cesar stone bench top
- Fully tiled modern bathroom with quality tap fittings
- Internal laundry with dryer

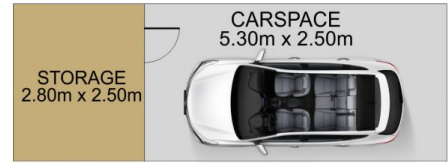
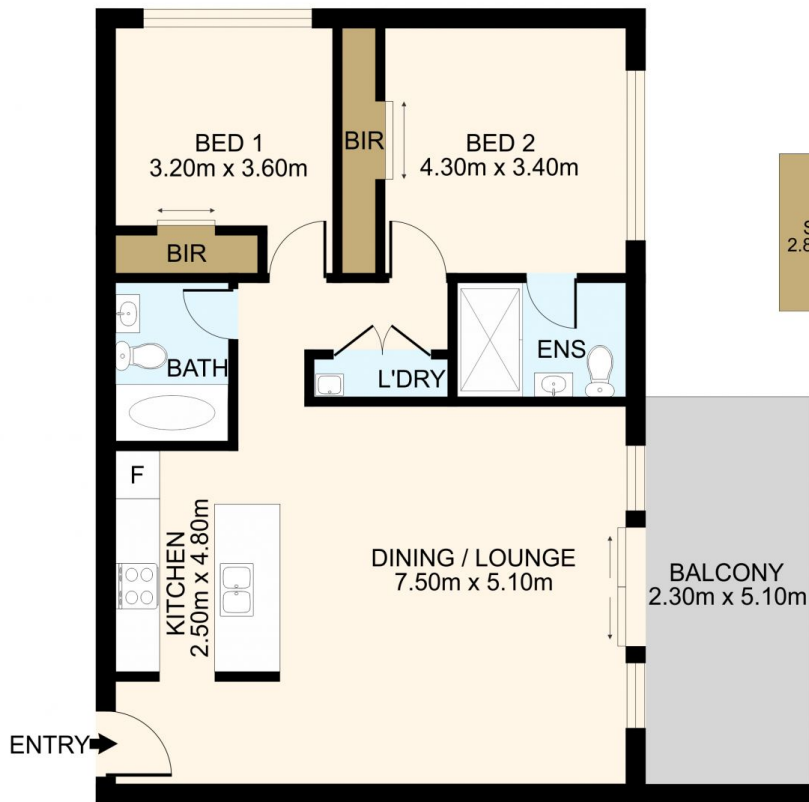
**Type** : Apartment

**View** : <https://www.lgvt.com.au/6694857>



**Aaron Cao**  
0451 818 185

[For full version visit the website](https://www.lgvt.com.au)



DISCLAIMER: THIS IS FOR ILLUSTRATIVE PURPOSES ONLY. ALL DIMENSIONS ARE APPROXIMATE AND IT DOES NOT CONSTITUTE PART OF ANY LEGAL DOCUMENTS.

ADDRESS:

1066/2E Porter St, Ryde.