



**4016/74B Belmore Street Ryde NSW**

1 1 1

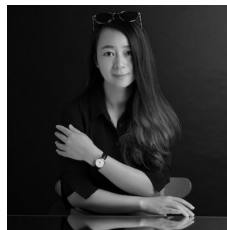
Located in sought after Ryde area, situated in the prestigious "Crowle Estate". The apartment offers sun-filled spacious lounge and large master bedroom. North-west facing undercover balcony provides alfresco living style. Corner position in the building brings the maximum privacy.

**Type** : Apartment  
**Price** : \$ 570,000  
**Building Size** : 86 sqm  
**View** : <https://www.lgvt.com.au/6828900>

Natural sun light enhances the open plan living and dining area.

Floor-to-ceiling sliding glass doors are installed in both the living room and the master bedroom, it boosts the brightness of the whole apartment.

Modern kitchen features gas-cooking-stove and quality



**Catherine (xiaochun) Dai**  
**02 9763 1126**

[For full version visit the website](https://www.lgvt.com.au)