



3611/91 Liverpool Street Sydney NSW

2 🚗 2 🚗 2 🚗

Inspection by Appointment Monday to Friday. Open inspection on Saturday
Please contact Aaron on 0451 818 185 for any enquires

Type : Apartment
View : <https://www.lgvt.com.au/7059948>

This stunning city apartment perched high on level 36 of the iconic World Tower. It enjoys unbeatable convenience to Town Hall Station, Darling Harbour and all the entertainments Sydney CBD has on offer.

Features include:

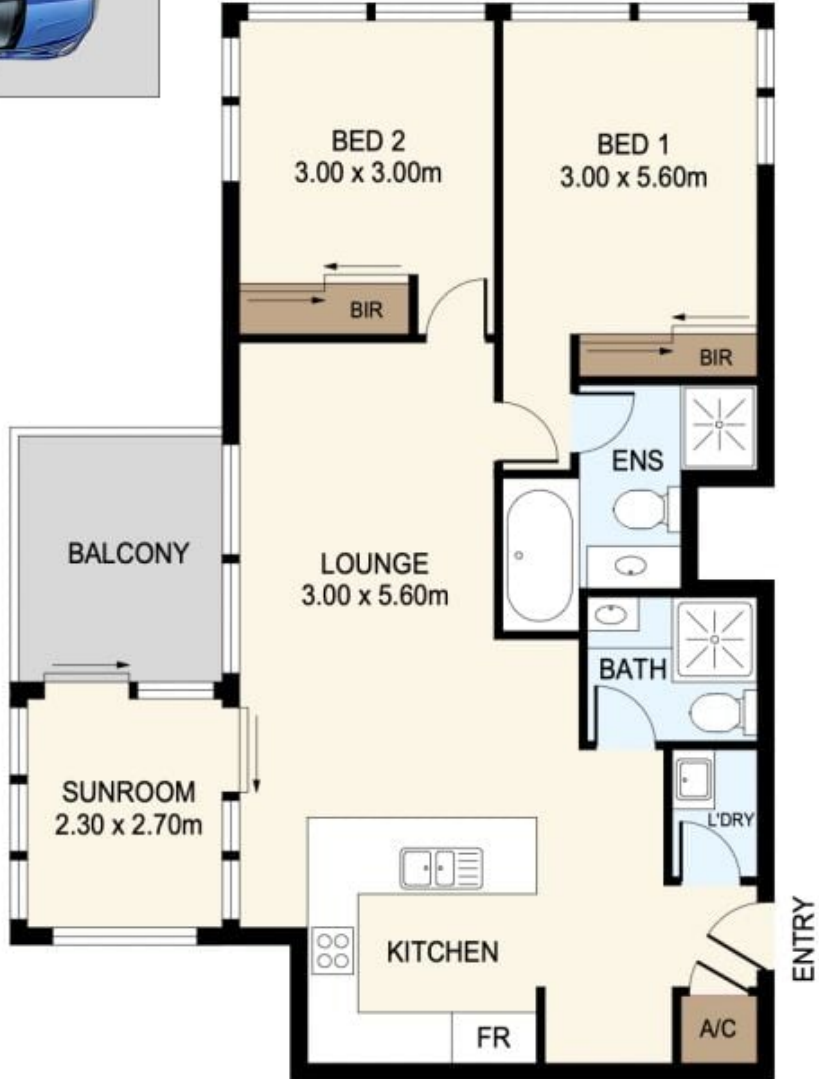
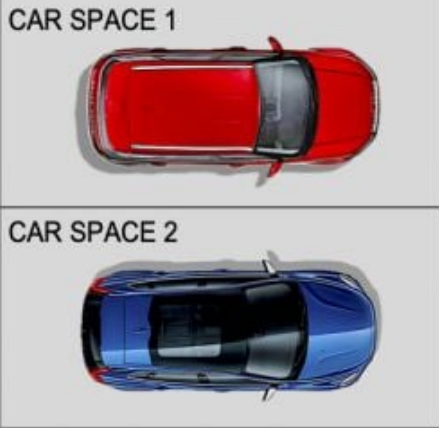
- Two secure parking spaces side by side
- Spacious bedrooms with built-in, combined living & dining
- Large Enclosed Sunny room with access to the open balcony



Aaron Cao
0451 818 185

[For full version visit the website](https://www.lgvt.com.au)

<https://www.lgvt.com.au>



DISCLAIMER: THIS IS FOR ILLUSTRATIVE PURPOSES ONLY. ALL DIMENSIONS ARE APPROXIMATE AND IT DOES NOT CONSTITUTE PART OF ANY LEGAL DOCUMENTS.

ADDRESS:
3611/91 LIVERPOOL STREET, SYDNEY