



**10908/5 Sam Sing Street Waterloo NSW**

2 2 1

Strikingly contemporary and naturally bright, this stunning ultra modern apartment reveals spacious proportions in a fresh modern decor. Set on middle-rise to enjoy beautiful views and the convenience of being moments to full amenities in Waterloo.

**Features:**

- Bright open plan living and dining area bathed in natural sunlight
- Sleek stone kitchen appointed quality appliances and gas cooking
- Generously proportioned bedrooms both with built-in wardrobes
- Master bedroom features an ensuite
- Ultra contemporary bathrooms with chic fittings and

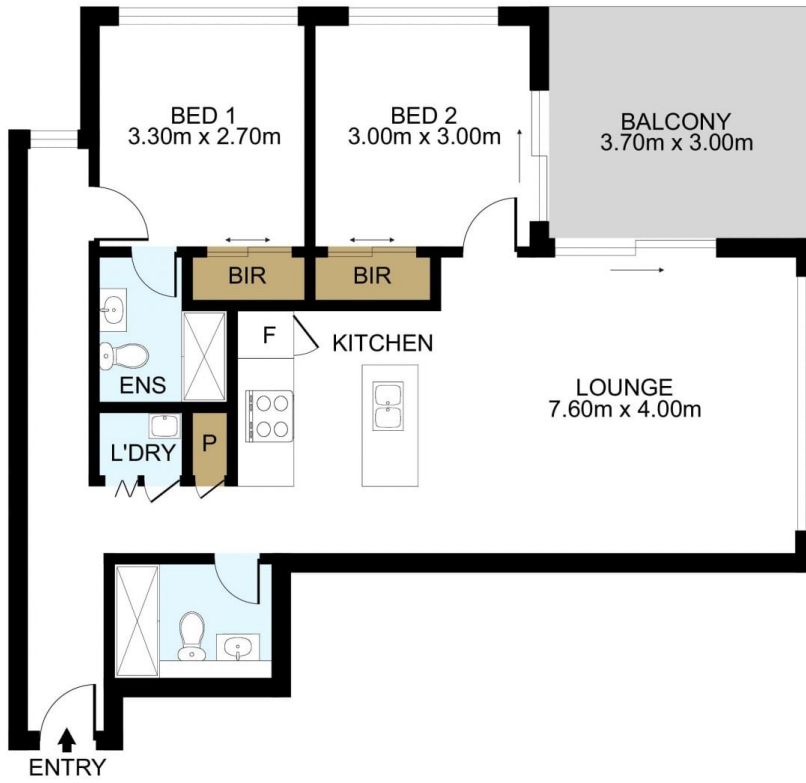
**Type** : Apartment

**View** : <https://www.lgvt.com.au/7413849>



**Aaron Cao**  
02 9763 1126

[For full version visit the website](https://www.lgvt.com.au)



DISCLAIMER: THIS IS FOR ILLUSTRATIVE PURPOSES ONLY. ALL DIMENSIONS ARE APPROXIMATE AND IT DOES NOT CONSTITUTE PART OF ANY LEGAL DOCUMENTS.

ADDRESS:

10908/5 Sam Sing St Waterloo