



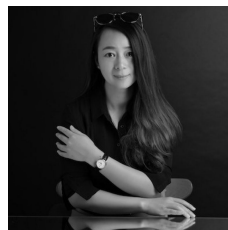
Level 5/506/28 Peninsula Drive Breakfast Point NSW

1 🛏 1 🚿 1 🚗

Offering a bayside top-level one-bedroom apartment with rare loft design, accommodate both home needs and office activities. Overlooking the beautiful garden, this apartment brings spacious living area, and a superior kitchen with stone benchtop and stainless-steel Miele appliances. Perfect for young couples and professionals.

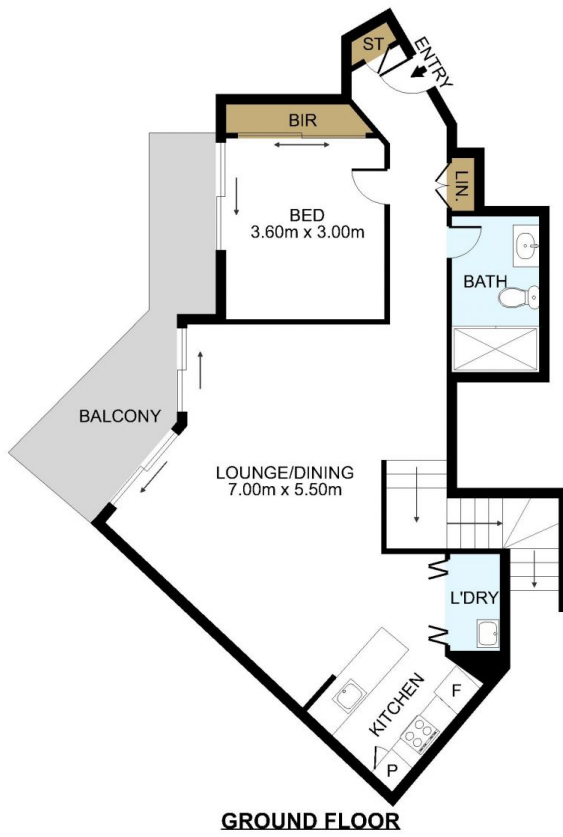
Type : Apartment
View : <https://www.lgvt.com.au/7642379>

Located in the SIRUIS building of a family friendly community, it has resort style swimming pool in front of the building, plus exclusive access to the Breakfast point Country Club. Walking distance to local shops, eateries, with Rhodes or Burwood shopping centre about 12 minutes driving distance away. Adjacent bus stops and Cabarita Wharf also provide flexible public transport alternatives. Enjoy a laid-back bayside lifestyle within half hour drive

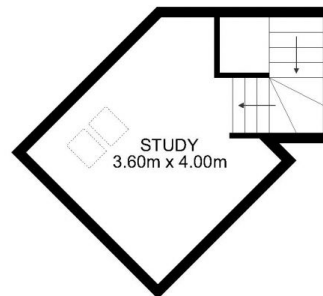


Catherine (xiaochun) Dai
02 9763 1126

[For full version visit the website](https://www.lgvt.com.au)



GROUND FLOOR



UPPER FLOOR



DISCLAIMER: THIS IS FOR ILLUSTRATIVE PURPOSES ONLY. ALL DIMENSIONS ARE APPROXIMATE AND IT DOES NOT CONSTITUTE PART OF ANY LEGAL DOCUMENTS.

ADDRESS:

506/28 Peninsula Drive, Breakfast point