



Level 5/5052/2E Porter Street Ryde NSW

1 1 1

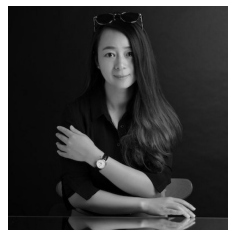
Located in the sought after Ryde area, this apartment of the prestigious "Crowle Estate" offers spacious lounge and bedroom. North-west facing and undercover balcony provides alfresco living style. Natural sun light enhances the open plan living and kitchen area. Floor-to-ceiling sliding glass doors in both living room and bedroom, boosts the brightness of the whole apartment.

Features:

- Modern kitchen features gas-cooking-stove and quality appliances.
- Built in wardrobe in bedroom.
- Contemporary bathroom fitted with a bathtub and an

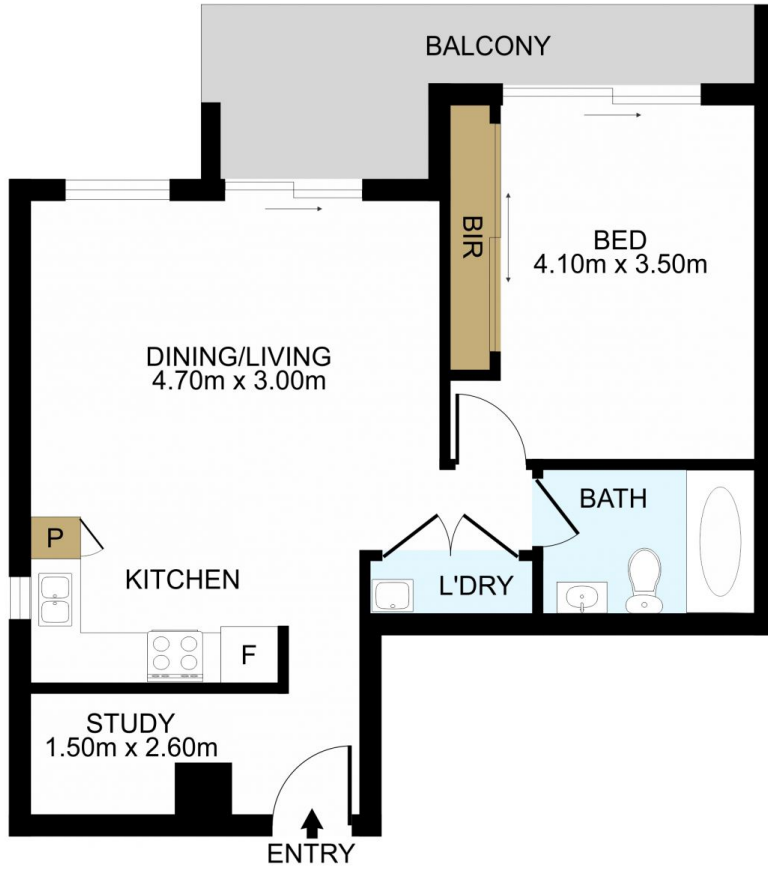
Type : Apartment

View : <https://www.lgvt.com.au/7737407>



Catherine (xiaochun) Dai
02 9763 1126

[For full version visit the website](https://www.lgvt.com.au)



DISCLAIMER: THIS IS FOR ILLUSTRATIVE PURPOSES ONLY. ALL DIMENSIONS ARE APPROXIMATE AND IT DOES NOT CONSTITUTE PART OF ANY LEGAL DOCUMENTS.

ADDRESS:

5052/2E Porter street Ryde