



1043/78A Belmore Street Ryde NSW

2  2  1 

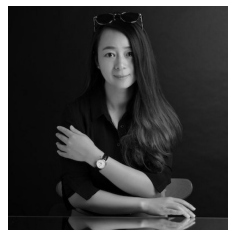
Located in the Crowle Estate Complex, this stunning north-east facing two bedroom apartment provides alfresco living style with under covered balcony. Natural sun light enhances the open plan living and bedroom area, boosts the brightness of the whole apartment. Close to the Parramatta River brings plenty of breezes for an afternoon walk. Besides, Top Ryde shopping center and Meadowbank shopping village are just a short driving distance away, ticking the boxes for all daily needs.

Property features:

- Large open plan living area,
- Good size master bedroom with built-in wardrobes and Ensuite,

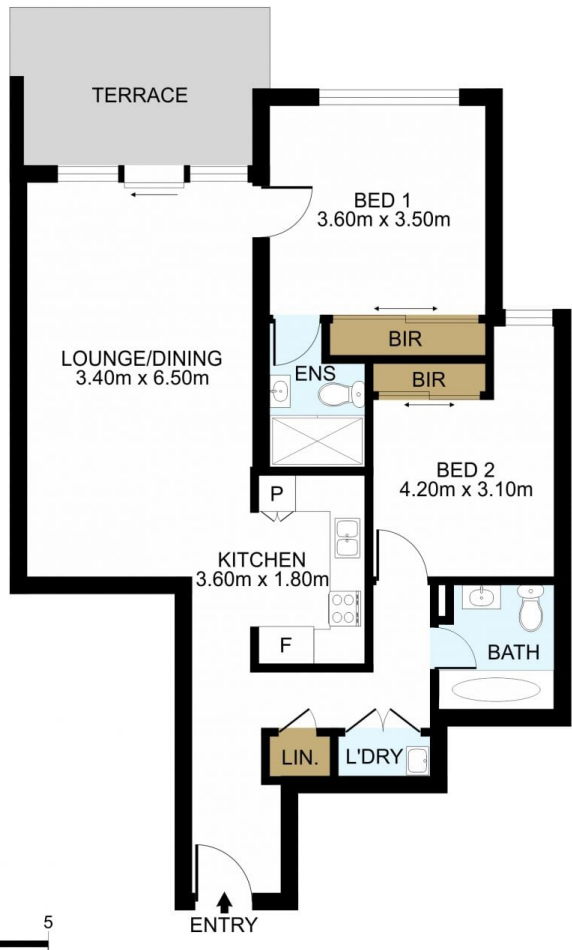
Type : Apartment

View : <https://www.lgvt.com.au/7745688>



Catherine (xiaochun) Dai
02 9763 1126

[For full version visit the website](https://www.lgvt.com.au)



DISCLAIMER: THIS IS FOR ILLUSTRATIVE PURPOSES ONLY.
ALL DIMENSIONS ARE APPROXIMATE AND IT DOES NOT
CONSTITUTE PART OF ANY LEGAL DOCUMENTS.

ADDRESS:

1043/78A Belmore Street, Ryde