



Level 10/1001A/12 Nancarrow Avenue Ryde NSW

1 1 1

Offering contemporary one-bedroom apartments located at the sought-after complex "Pearl of the Bay" in Ryde. Natural sun light from the North-East facing balcony enhances the brightness of the spacious open plan living area. With cafes, shops, restaurants, and parks just a few steps away, it also closes to Meadowbank Station, Wharf as well as bus stops leading to city CBD. Ideal choice for a convenient and bay side lifestyle.

Features:

- Modern kitchen features gas-cooking-stove and quality appliances.
- Spacious bedroom with built-in wardrobe and access to balcony,
- Open plan lounge and dining,
- Study nook.

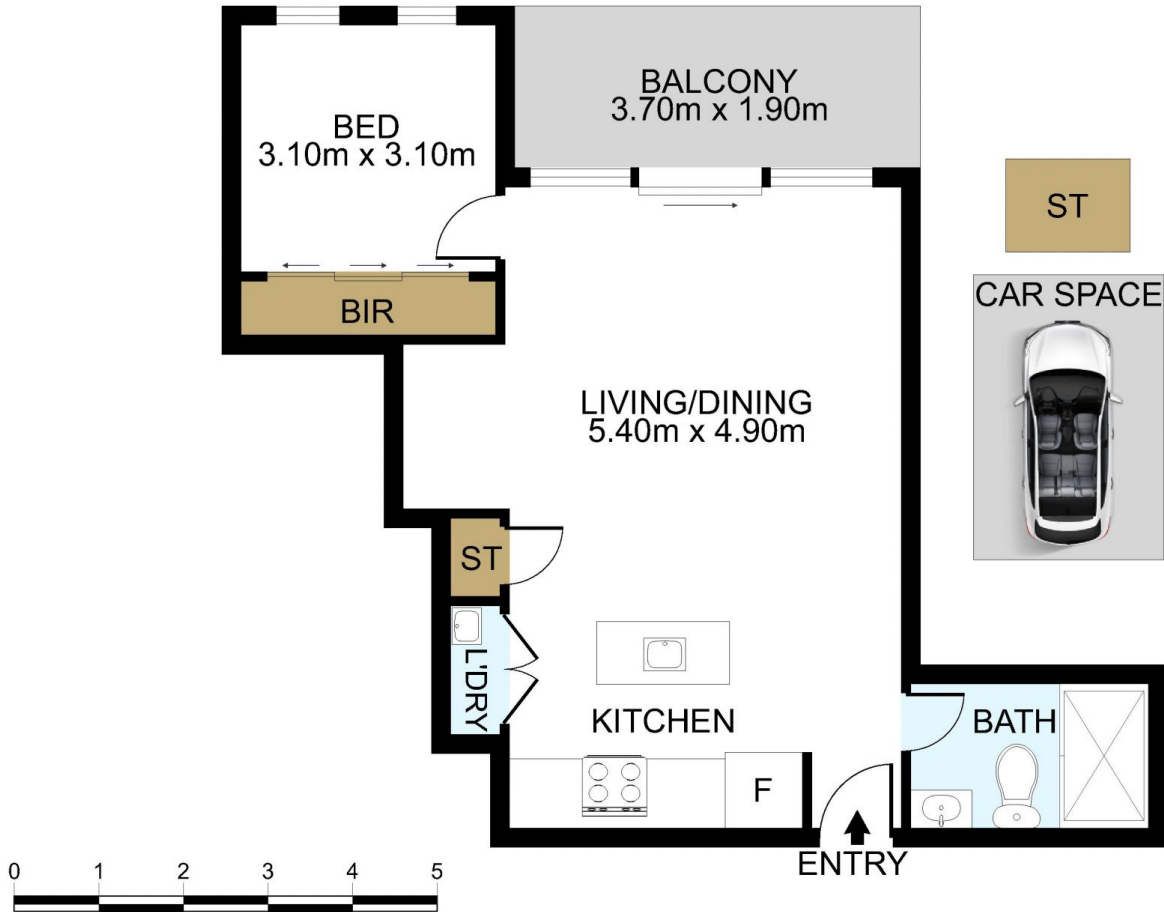
Type : Apartment

View : <https://www.lgvt.com.au/7893684>



Catherine (xiaochun) Dai
02 9763 1126

[For full version visit the website](https://www.lgvt.com.au)



DISCLAIMER: THIS IS FOR ILLUSTRATIVE PURPOSES ONLY.
ALL DIMENSIONS ARE APPROXIMATE AND IT DOES NOT
CONSTITUTE PART OF ANY LEGAL DOCUMENTS.

ADDRESS:

1001A/2 Nancarrow ave, Meadowbank