



**86 Northbourne Drive Marsden Park NSW**

4 3 2

Located at one of the fastest growing communities in Sydney, this double-storey house comes with 4 bedrooms, double garage, and spacious living area. It is adjacent to the hub of the Marsden Park business area, and also within walking distance to shopping center and kid playground, perfect for business professionals as well as families.

**Features:**

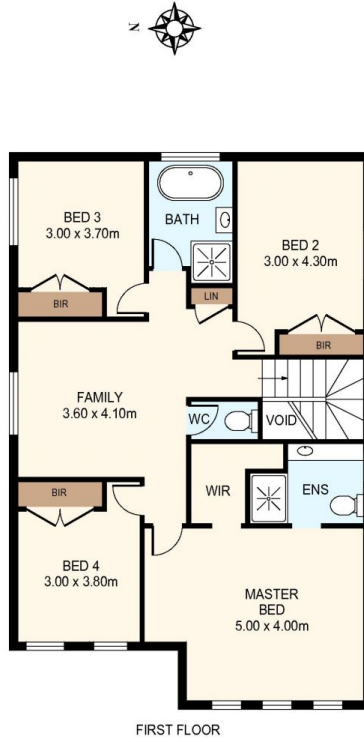
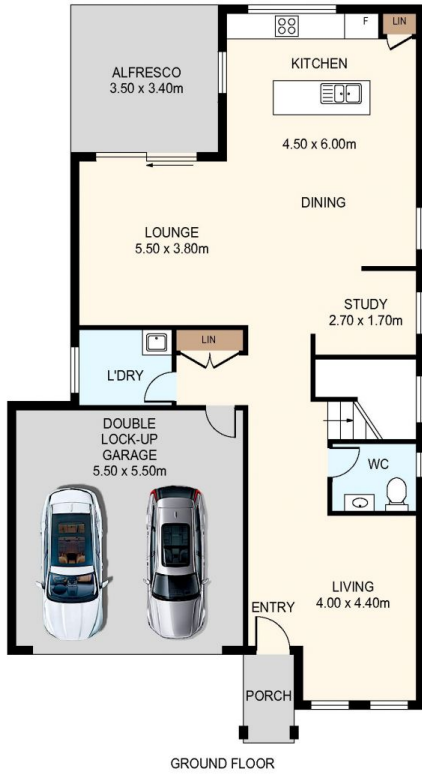
- Generous kitchen with an abundance of cupboards and storage
- Extensive open-plan casual living area with dining space
- Bedrooms are well segregated and with built-in wardrobes,
- Master bedroom equipped with an ensuite and a large walk-in robe,

**Type** : House  
**Land Size** : 355 sqm  
**View** : <https://www.lgvt.com.au/8025048>



**Catherine (xiaochun) Dai**  
**02 9763 1126**

[For full version visit the website](https://www.lgvt.com.au)



DISCLAIMER: THIS IS FOR ILLUSTRATIVE PURPOSES ONLY. ALL DIMENSIONS ARE APPROXIMATE AND IT DOES NOT CONSTITUTE PART OF ANY LEGAL DOCUMENTS.

ADDRESS:

86 NORTHBOURNE DRIVE, MARSDEN PARK