



Level 3/322/10 Hezlett Road North Kellyville NSW

2 2 1

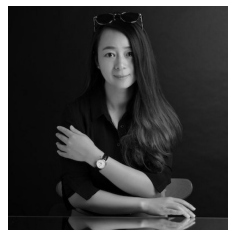
Offering beautifully designed two bedrooms apartment with spacious living area, along with two bathrooms and one car space. Sit at prime location, it has easy access to main arterial roads and Kellyville Metro station. Adjacent bus stops have direct connections with both Sydney and Parramatta CBD. Besides, the North Village Shopping center is just around the corner, and Rouse hill town center is also about 10 minutes away by driving.

Featuring:

- Each bedroom with built-in wardrobes,
- Master bedroom with ensuite
- Modern and Stylish kitchen,
- Internal laundry room with cupboard;
- Oversized living area;

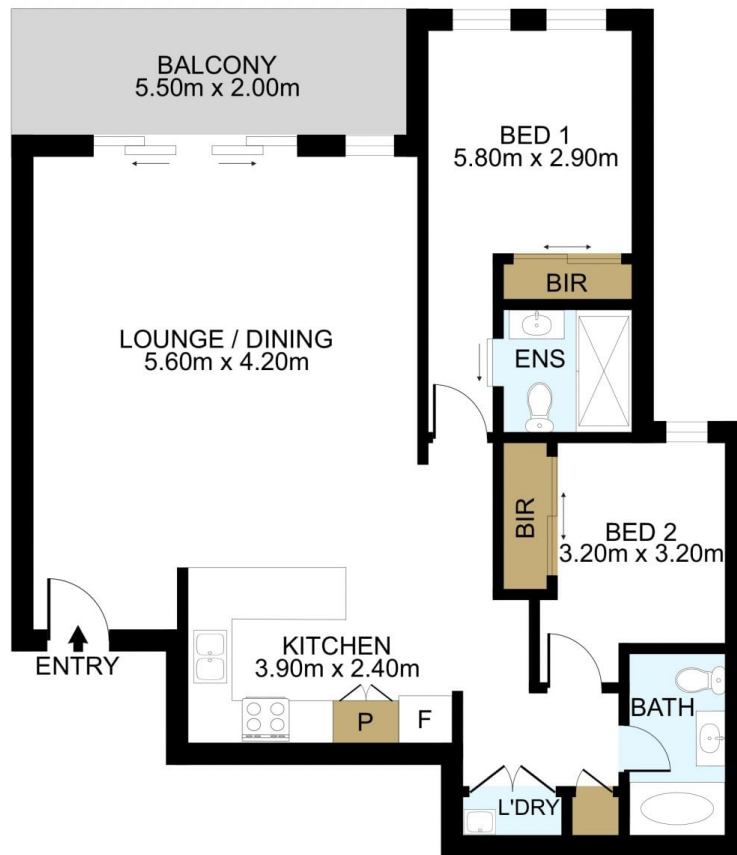
Type : Apartment

View : <https://www.lgvt.com.au/8037219>



Catherine (xiaochun) Dai
02 9763 1126

[For full version visit the website](https://www.lgvt.com.au)



TOTAL AREA = 108.30 SQM

DISCLAIMER: THIS IS FOR ILLUSTRATIVE PURPOSES ONLY. ALL DIMENSIONS ARE APPROXIMATE AND IT DOES NOT CONSTITUTE PART OF ANY LEGAL DOCUMENTS.

ADDRESS:

322/10 Hezlett Road, Kellyville