



**502/22B George Street Leichhardt NSW**

2 2 1

Offering stunning two-bedroom apartment in a vibrant suburb Leichhardt, with north facing bringing sufficient daylight all year round. The living and dining area flows to a generous balcony for alfresco moments and offers resort experience including communal garden with BBQ area and swimming pool. Quality kitchen with stone benchtops, European appliances including gas cooktop, ducted air-conditioning throughout.

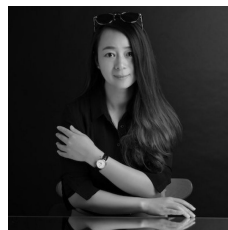
Easy access to Taverners Hill Light Rail station or Lewisham Train Station led to Sydney CBD. Comprehensive amenities include Norton Plaza and Marketplace Leichhardt, are also within walking distance.

Features,

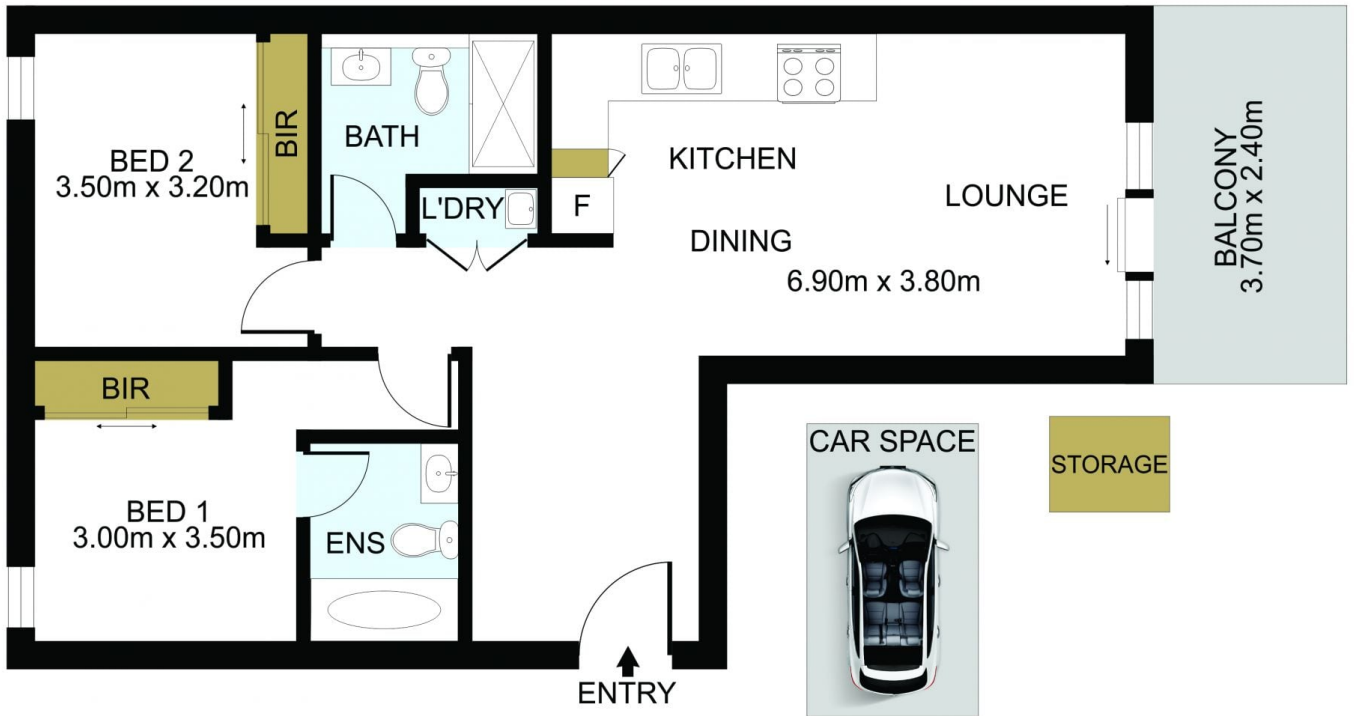
[For full version visit the website](https://www.lgvt.com.au)

**Type** : Apartment

**View** : <https://www.lgvt.com.au/8042124>



**Catherine (xiaochun) Dai**  
02 9763 1126



DISCLAIMER: THIS IS FOR ILLUSTRATIVE PURPOSES ONLY.  
ALL DIMENSIONS ARE APPROXIMATE AND IT DOES NOT  
CONSTITUTE PART OF ANY LEGAL DOCUMENTS.

ADDRESS:

502/22B George street, Leichhardt