



G63/1 Betty Cuthbert Avenue Sydney Olympic Park NSW

1  1  1 

Located in the heart of Sydney Olympic Park, this one bedroom apartment with study is designed to make a lasting impression. With its thoughtfully planned layout and attention to detail, it offers a delightful living experience with resort-style facilities.

Type : Apartment

Price : \$ 560,000

View : <https://www.lgvt.com.au/8085760>

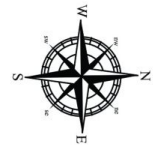
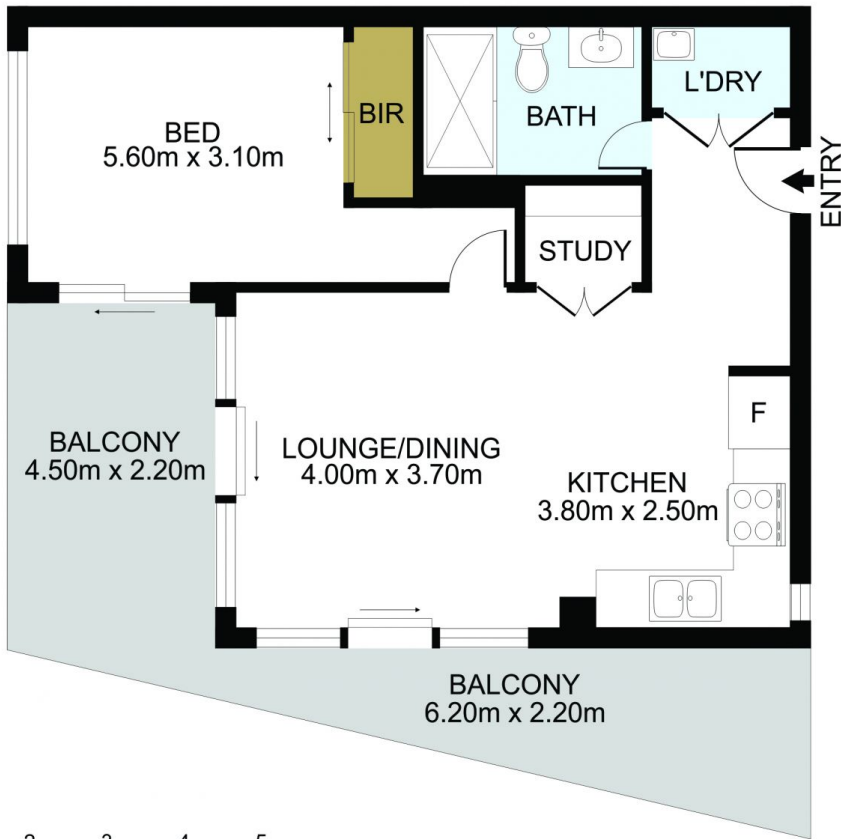
APARTMENT FEATURES

- Generous east facing living area
- Thoughtfully planned out modern, open-plan layout with free-flowing living areas
- Contemporary kitchen with stone bench tops, stainless-steel Miele gas stove and ducted range hood, and European ILVE kitchen appliances



Aaron Cao
0451 818 185

[For full version visit the website](https://www.lgvt.com.au)



DISCLAIMER: THIS IS FOR ILLUSTRATIVE PURPOSES ONLY. ALL DIMENSIONS ARE APPROXIMATE AND IT DOES NOT CONSTITUTE PART OF ANY LEGAL DOCUMENTS.

ADDRESS:

G63/1 Betty Cuthbert Avenue, Sydney Olympic Park