

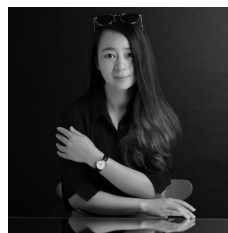
C107/27-29 George Street North Strathfield NSW

4 🚗 2 🚲 2 🚘

Presents a rare opportunity with full brick 4 bedrooms apartment in the heart of North Strathfield. Newly renovated with tiled and timber flooring and high standard finishes. East and West facing capture sufficient natural light throughout the day. Unique private entrance offers townhouse experience. Spacious living area provides flexibility to meet work, study, and family needs, suitable for both owner occupied as well as investment.

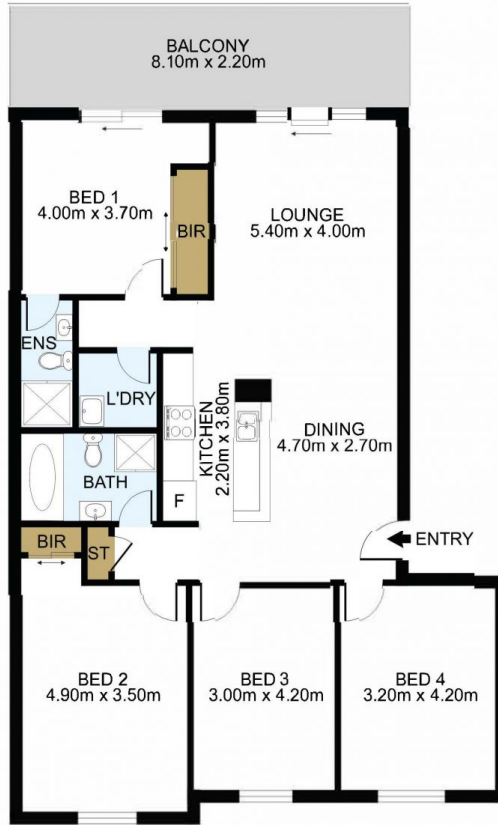
Type : Apartment
Price : \$ 965,000
View : <https://www.lgvt.com.au/8093194>

Comes with two secure undercover car spaces, it is well accessible to most of the Sydney Area via driving thanks to the relatively center location of North Strathfield. Besides, West Concord Station is merely about 600 meters away, making public transport always an effortless alternative. Meanwhile, Local amenities, such as grocery stores, bottle



Catherine (xiaochun) Dai
02 9763 1126

[For full version visit the website](https://www.lgvt.com.au)



DISCLAIMER: THIS IS FOR ILLUSTRATIVE PURPOSES ONLY.
ALL DIMENSIONS ARE APPROXIMATE AND IT DOES NOT
CONSTITUTE PART OF ANY LEGAL DOCUMENTS.

ADDRESS:

C107/27 George Street North Strathfield