

725/2E Charles Street Canterbury NSW

2 2 1

Please contact Aaron on 0451 818 185 for inspection

Positioned in the vibrant heart of Canterbury, this sleek stylish super sized apartment situated on the 7th floor is sitting in a prime location with only a stroll to Canterbury Station/Plaza, Canterbury Ice rink & pool, parklands, schools and public transport, great opportunity to capitalise on the future growth in this upcoming suburb.

What we like:

- Oversized Bedrooms with built-in wardrobe
- Bright & airy open plan living and dining with Carpet throughout
- Designed gas kitchen with quality stainless steel appliances and dishwasher

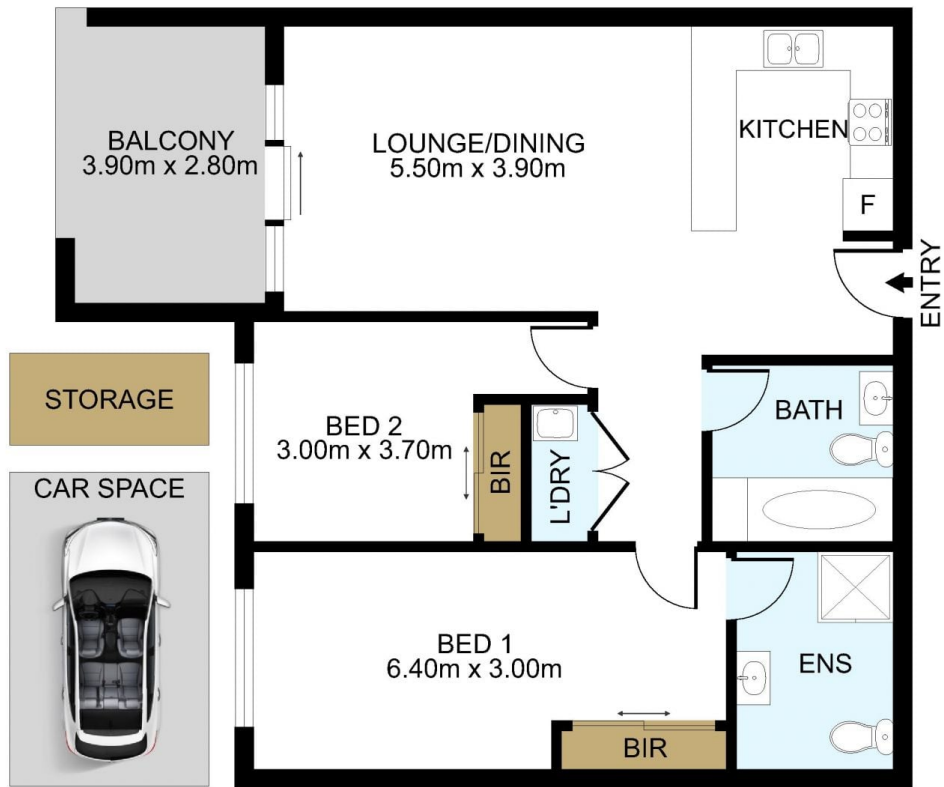
Type : Apartment

View : <https://www.lgvt.com.au/8110047>



Aaron Cao
0451 818 185

[For full version visit the website](https://www.lgvt.com.au)



DISCLAIMER: THIS IS FOR ILLUSTRATIVE PURPOSES ONLY. ALL DIMENSIONS ARE APPROXIMATE AND IT DOES NOT CONSTITUTE PART OF ANY LEGAL DOCUMENTS.

ADDRESS:

725/2E Charles St Canterbury