






501/11 Shoreline Drive Rhodes NSW

2  2  1 

Massive 148m2 Corner Apartment with Water View

Please contact 0451 818 185 for more information

Located just footsteps from all the convenient lifestyle benefits Rhodes has to offer, this superb contemporary entertainers' delight offers enormous open-plan living spaces flow seamlessly onto a huge wrap-around balcony that provide an idyllic spot to relax or spend time with friends and family.

The complex provides heated indoor pool and private established gardens all in immaculate condition. Generously sized bedrooms are equipped with mirrored built ins and can enjoy landscaped gardens.

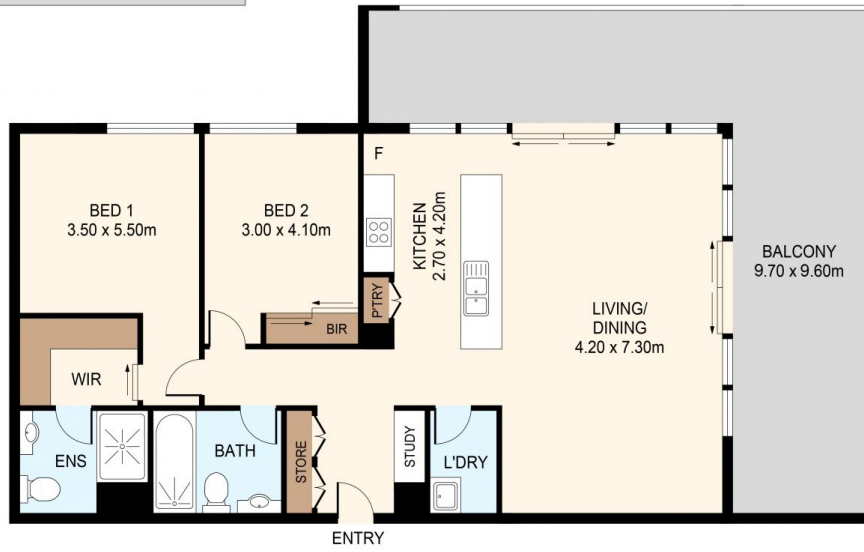
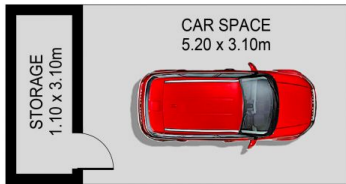
Type : Apartment

View : <https://www.lgvt.com.au/8148003>



Aaron Cao
0451 818 185

[For full version visit the website](https://www.lgvt.com.au)



DISCLAIMER: THIS IS FOR ILLUSTRATIVE PURPOSES ONLY.
ALL DIMENSIONS ARE APPROXIMATE AND IT DOES NOT
CONSTITUTE PART OF ANY LEGAL DOCUMENTS.

ADDRESS:

501/11 SHORELINE DRIVE, RHODES