



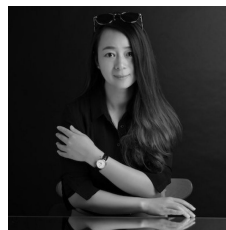
89/127 Park Road Rydalmere NSW

3 **2** **2**

Offering this newly renovated full brick three-bedroom townhouse with a multi-purpose room convertible to be an home office or extra bedroom. North facing living room has easy access to spacious outdoor spaces capturing ample natural light all year round. It also comes with lock-up double garage. Ideal for growing families as well as savvy investors.

Surrounded by friendly neighbourhood, it is within walking distance to local shops, schools & childcare, and public transport including the upcoming light rail station. Besides, Parramatta CBD, Carlingford Shopping Centre, Eastwood Shopping Centre and Western Sydney University are also with 10 minutes driving distance.

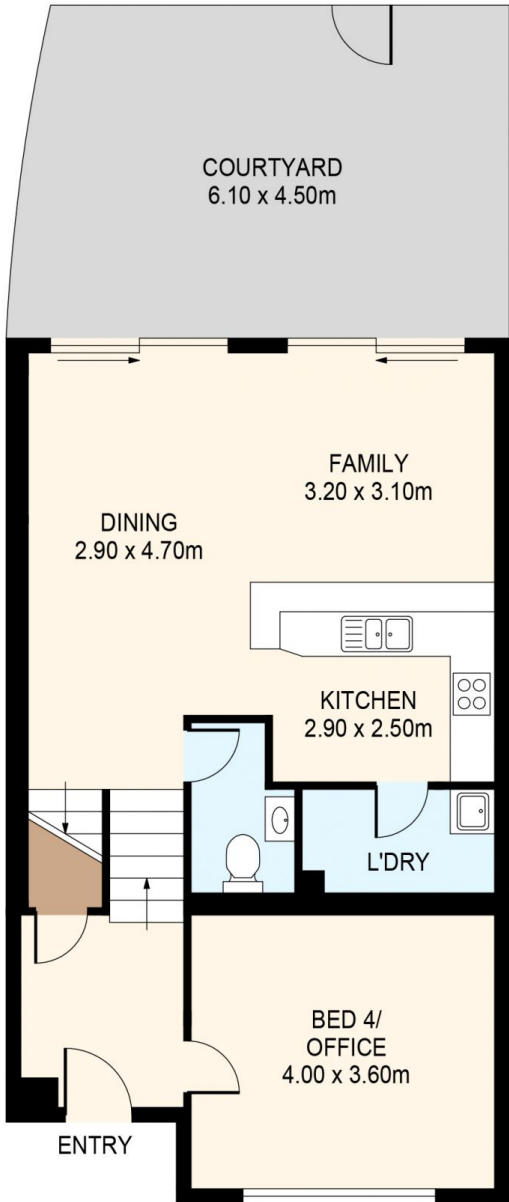
Type : Townhouse
View : <https://www.lgvt.com.au/8161380>



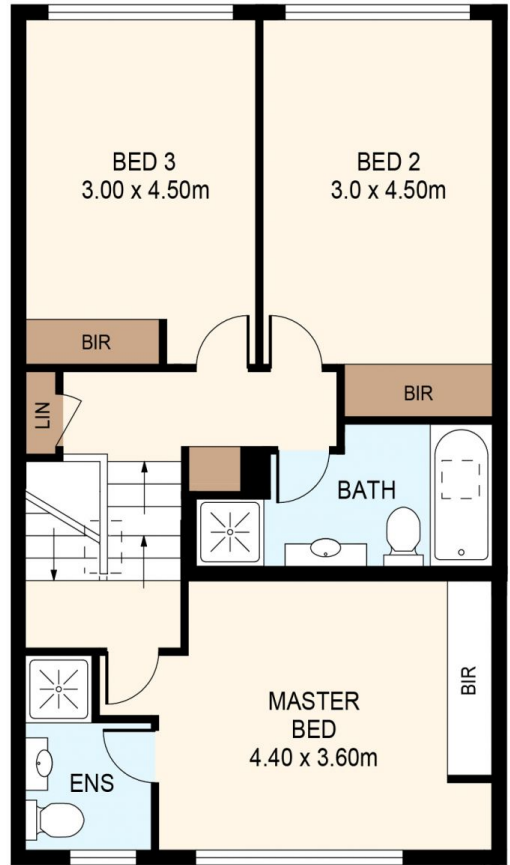
Catherine (xiaochun) Dai
02 9763 1126

[For full version visit the website](https://www.lgvt.com.au)

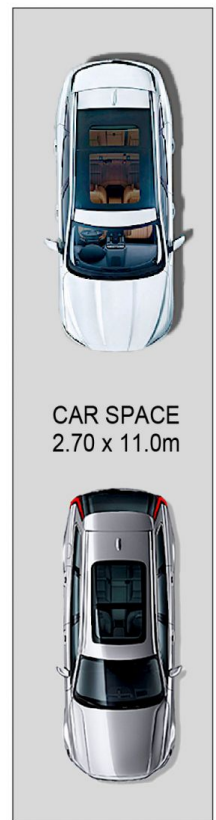
<https://www.lgvt.com.au>



GROUND FLOOR



FIRST FLOOR



DISCLAIMER: THIS IS FOR ILLUSTRATIVE PURPOSES ONLY. ALL DIMENSIONS ARE APPROXIMATE AND IT DOES NOT CONSTITUTE PART OF ANY LEGAL DOCUMENTS.

ADDRESS: 89/127 PARK ROAD, RYDALMERE