

1204/1 Village Place Kirrawee NSW

3 2 2

Set on the 12th floor with expansive views of Sydney from the CBD to the Royal National Park, Cronulla Beach and Botany Bay. This home features luxury finishes and is a short lift ride to restaurants, cafes and shopping centre.

Type : Apartment
Price : \$ 1,465,000
View : <https://www.lgvt.com.au/8453082>

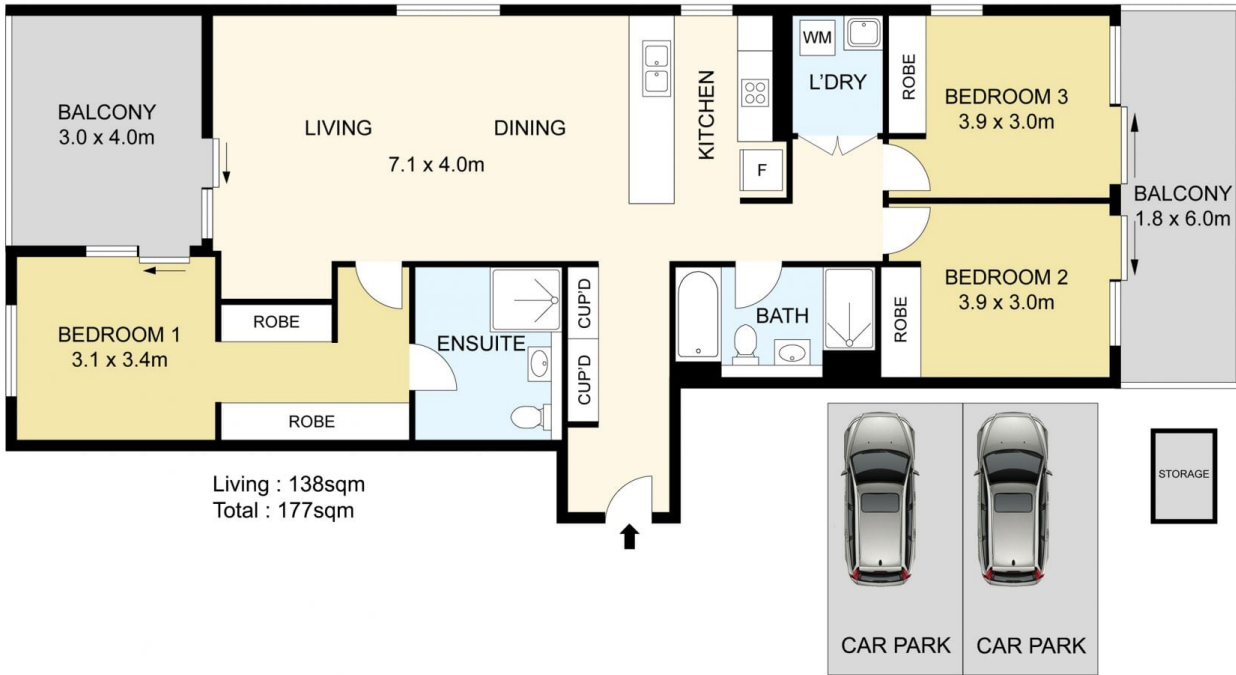
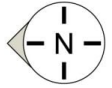
Features :

- Living Area 138sqm ; Total Area 177sqm
- Two extra large parking spaces with possibly for parking 3 cars.
- Intelligently designed floor plans with storage throughout
- Modern kitchen with Smeg appliances
- Two large balconies with stunning outlook
- Built-in wardrobes in all bedrooms, main with ensuite
- Light-filled spacious living areas with study nook
- Immaculate security complex with lift access and secure



Aaron Cao
0451 818 185

[For full version visit the website](https://www.lgvt.com.au)



DISCLAIMER: THIS IS FOR ILLUSTRATIVE PURPOSES ONLY. ALL DIMENSIONS ARE APPROXIMATE AND IT DOES NOT CONSTITUTE PART OF ANY LEGAL DOCUMENTS.

ADDRESS:

1204/1 Village Place, Kirrawee, NSW 2232