



502/17 Woodlands Avenue Breakfast Point NSW

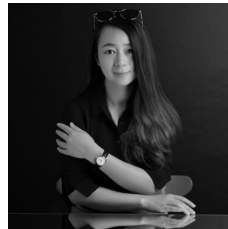
2 🛏 2 🚿 1 🚗

Rare, unique, exclusive all words that befit Providence. Presenting a two-bedroom apartment with 2 bathrooms, 1 car space and a storage cage. Located in Providence, this stunning apartment offers an expansive sun-drenched balcony accessed from the living room via full height glass sliding doors, ideal for outdoor entertaining or just relaxing. At Providence, space and extras are the ultimate luxuries.

This apartment is air conditioned to the living and dining room and master bedroom, fitted with LED down-lights throughout and wool carpet. The European style designer kitchen includes premium Miele appliances set in crafted cabinetry of polyurethane contrasting with the warm tones of timber veneer displays in the island bench. The marble-inspired Caesarstone bench tops and splashbacks

Type : Apartment

View : <https://www.lgvt.com.au/8502811>



Catherine (xiaochun) Dai
02 9763 1126

[For full version visit the website](https://www.lgvt.com.au)



DISCLAIMER: THIS IS FOR ILLUSTRATIVE PURPOSES ONLY. ALL DIMENSIONS ARE APPROXIMATE AND IT DOES NOT CONSTITUTE PART OF ANY LEGAL DOCUMENTS.

ADDRESS:
502/17 Woodlands Ave Breakfast Point