




**2/538 Woodville Road Guildford NSW**

2  2  2 

Ideal for first home buyers, those looking to downsize, or smart investors, this easy-care residence offers comfort, convenience, and excellent value. Perfectly positioned close to public transport, shopping centres, schools, and everyday amenities, this property combines lifestyle convenience with outstanding future growth potential. The unit features expansive, seamless white large-format tiles throughout, creating an airy and modern aesthetic

**Type** : Apartment

**View** : <https://www.lgvt.com.au/8594883>

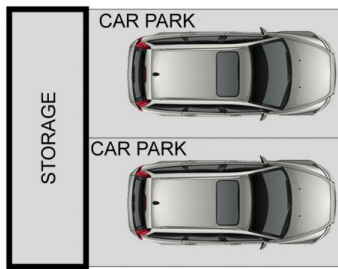
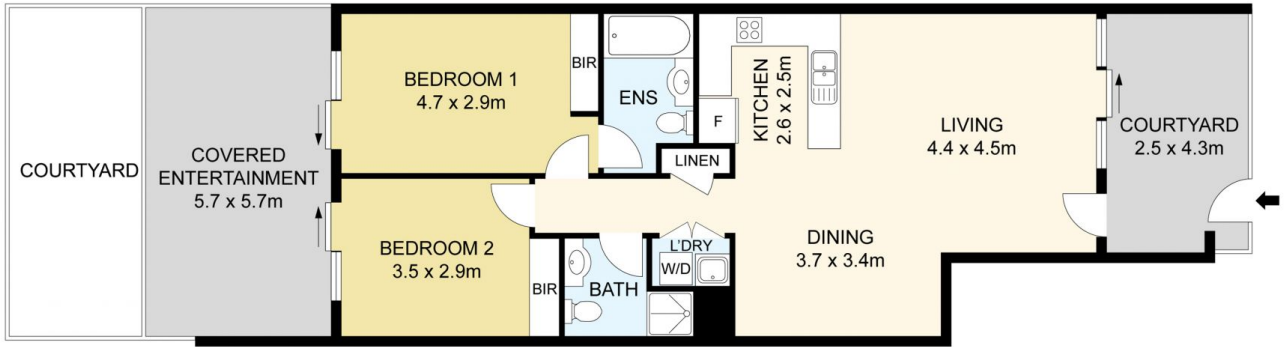
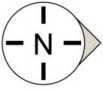
**FEATURES YOU'LL LOVE:**

- ? Spacious bedrooms complete with built-in wardrobes
- ? Stylish modern kitchen featuring gas cooking, quality appliances, glass splashback, and dishwasher
- ? Bright open-plan living and dining area with plenty of natural light and split system air conditioning



**Aaron Cao**  
**0451 818 185**

[For full version visit the website](https://www.lgvt.com.au)



DISCLAIMER: THIS IS FOR ILLUSTRATIVE PURPOSES ONLY. ALL DIMENSIONS ARE APPROXIMATE AND IT DOES NOT CONSTITUTE PART OF ANY LEGAL DOCUMENTS.

ADDRESS:

2/538 Woodville Road, Guildford NSW 2161