



## 2201/11 Hassall Street Parramatta NSW

2  2  1 

Strikingly contemporary and naturally bright, this stunning ultra-modern two bedroom apartment reveals spacious proportions in a fresh modern decor. It is set on a high-rise to enjoy beautiful views and the convenience of being in the heart of Parramatta city. Thanks to the premium community, it provides a high-quality living environment for your life.

Stroll to Parramatta Riverside. Walking distance to Westfield Parramatta and train station.

### Features:

- Bright open-plan living and dining area bathed in natural sunlight
- Sleek stone kitchen appointed quality appliances and gas

**Type** : Apartment

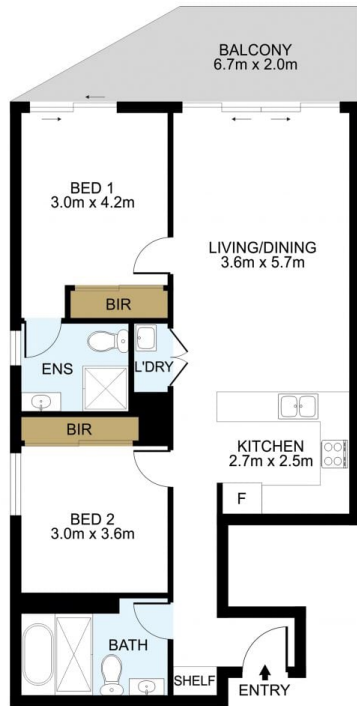
**Price** : Price Guide \$750,000 to \$820,000

**View** : <https://www.lgvt.com.au/8683064>



**Simon Zheng**  
02 9763 1126

[For full version visit the website](https://www.lgvt.com.au)



2201/11 Hassall Street, Parramatta, NSW 2150



**Unit No.** 2201

**Lot No.** 121

Level	22
Internal Area	sqm
Balcony / Terrace Area	sqm
Total	sqm

(1) All information given in relation to the property, whether contained in this document or given orally is indicative and subject to confirmation by reference to the sales contract in respect to unit area, finishes and fixtures.

(2) Intending purchasers should satisfy themselves as to the truth or accuracy of all information given by their own inspections, searches, inquiries, or as otherwise necessary.

