



EP-HOUSE INCLUSIONS: LIVING

1. PACO Laminate Flooring to Entry, Hallway, Family and Mezzanine living area
2. High quality Carpet on the staircase and 1st floor and all bedrooms in ground floor
3. 47mm perimound **Sillings and Architrave**
4. Provide Feature Wall colour to One Room wall



Address Available On Request Street Oran Park NSW

This brand new house offering the ultimate lifestyle with charm and character. Surrounded by quality homes and located with-in walking distance to local schools, Oran park Town, parks and walk ways. This big block offers completely utilises the potential of the land with efficient space designing.

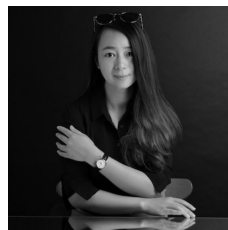
Inclusions:

- Engineered and certified STEEL frames.
- Colorbond Steel Fencing System.
- Hebel External Wall System.
- 2500mm ceiling height for Ground Floor.
- Aluminium SINGLE-GLAZING windows.
- 20mm Stone Kitchen Bench Top.
- Kleenmaid 600mm Kitchen Cooking Range.

Type : House

Price : 635,500-784,300

View : <https://www.lgvt.com.au/8687331>



Catherine (xiaochun) Dai
02 9763 1126

[For full version visit the website](https://www.lgvt.com.au)



